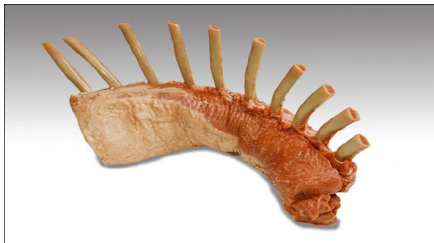


Sanglier Louisa  
 Origine  
 Pologne  
Nouveauté 2009

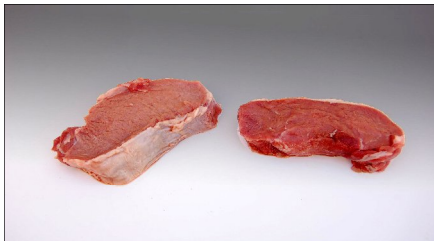
**LOUISA**  
*Naturel*



GMP (GA9-GAZ) Frenched Rack de Sanglier Louisa  
 Selle a/os  
 Cal: ± 500-600gr  
 Carton: 2kg  
 Origine: Pologne



GAF Fettina de Sanglier Louisa  
 Cuissot  
 Cal: ± 50-70gr  
 Carton: 5x500gr  
 Origine: Pologne



GBC-GB1 Steak de Sanglier Louisa  
 Selle  
 Cal: GBC ± 35-65gr en GB1 ± 60-100gr  
 Carton: 5x500gr  
 Origine: Pologne

*Nature's Cuisine*

*Bon  
 appétit*

